



# Prestige HealthNet

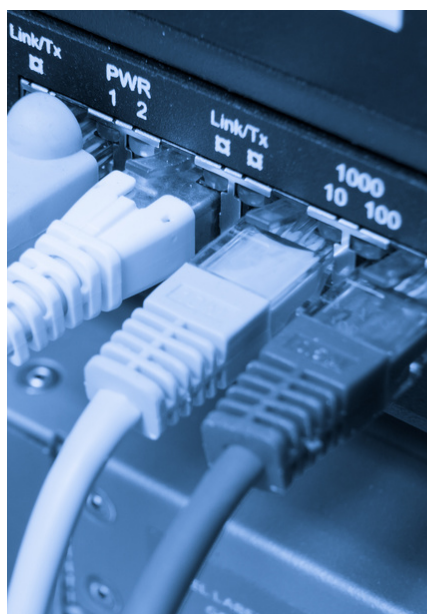
## Network Assessment - What to Expect

Prestige's network assessment will provide you with a deeper understanding of the weak points in your facility's network

Our network analysis will pull all of the necessary data and information regarding your **network's performance**. This will allow us to show you what areas your networks is lacking in and what effect that is having on your patient care and other services.

Once we know where the issues are we can begin to prescribe the remedies and discuss what steps are needed to get your network back on track.

**We perform this expert network assessment so you can be confident your connection—and your hospital—will continue to run smoothly.**




We utilize the proper expertise and tools to evaluate your entire network, identify and rank risks by severity, and help resolve any issues **before** they become a major problem. After the assessment, you'll know:

- If you have any network vulnerabilities
- If there are existing problems on the network
- Immediate steps we can take to solve urgent problems
- How we can help future proof your network

**Trust your network to work - without the guesswork.**

If you have any questions please feel free to contact us

 1-251-776-3600

 [sales@prestigehealthnet.com](mailto:sales@prestigehealthnet.com)

 [prestigehealthnet.com](http://prestigehealthnet.com)